

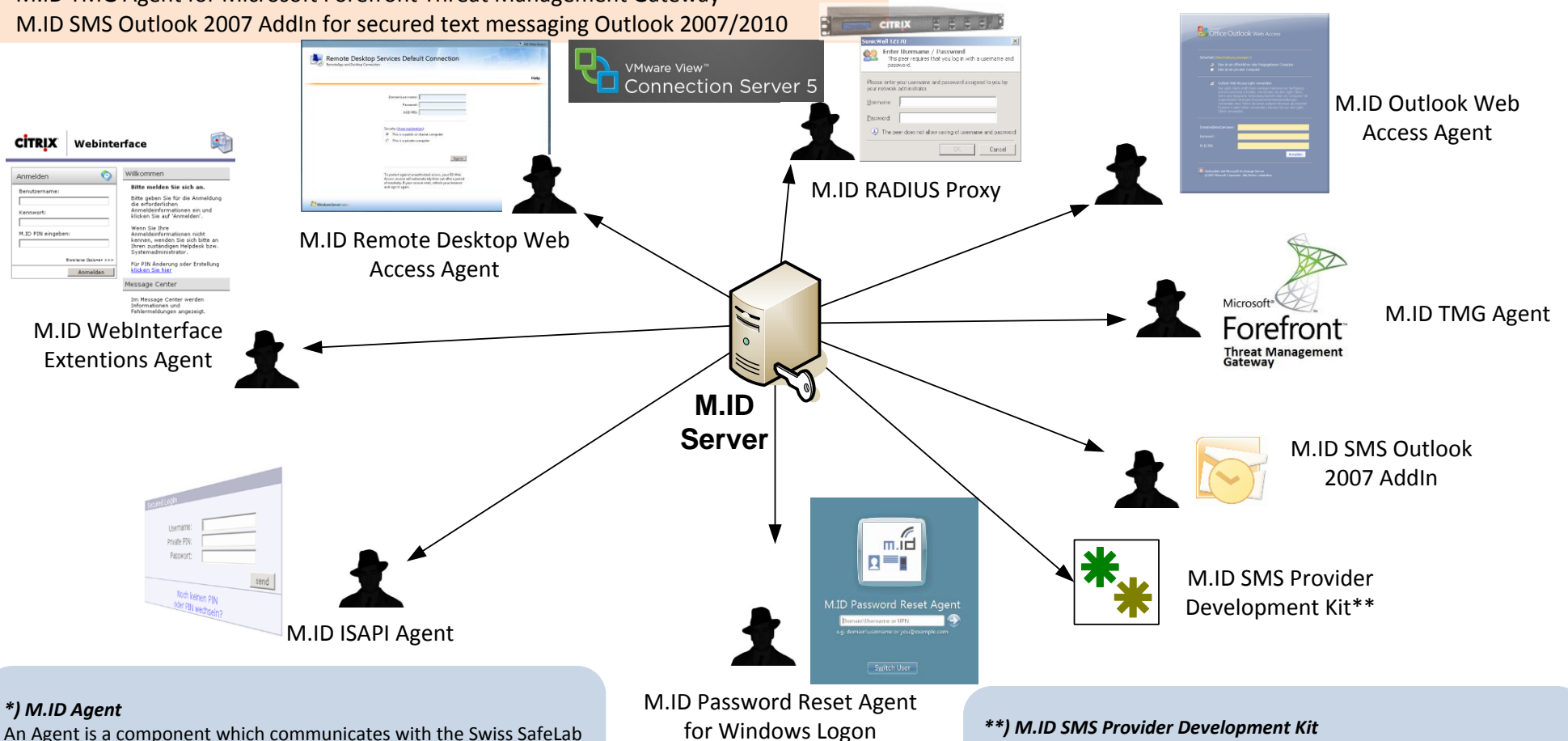
## Multitude possibilities of use for Swiss SafeLab M.ID



The Swiss SafeLab M.ID Server handles the following components (Agents\*)

- M.ID RADIUS Proxy for RADIUS authentication (Citrix Netscaler, SonicWALLs, ...)
- M.ID Citrix WebInterface Agent for Citrix WebInterfaces login protection
- M.ID ISAPI Agent secures logins on any websites on IIS servers
- M.ID Password Reset Agent for Windows Logon
- M.ID OWA Agent protects Microsoft Office Outlook Web Access 2007/2010
- M.ID Remote Desktop Web Access Agent for Microsoft Remote Desktop Web Access
- M.ID TMG Agent for Microsoft Forefront Threat Management Gateway
- M.ID SMS Outlook 2007 AddIn for secured text messaging Outlook 2007/2010

*The modular design of Swiss SafeLab M.ID allows to secure any kind of current and future logon portals and appliances. Merely one M.ID Agent for the designated portal/appliance has to be implemented which receives the credentials and pass them to the M.ID Server.*



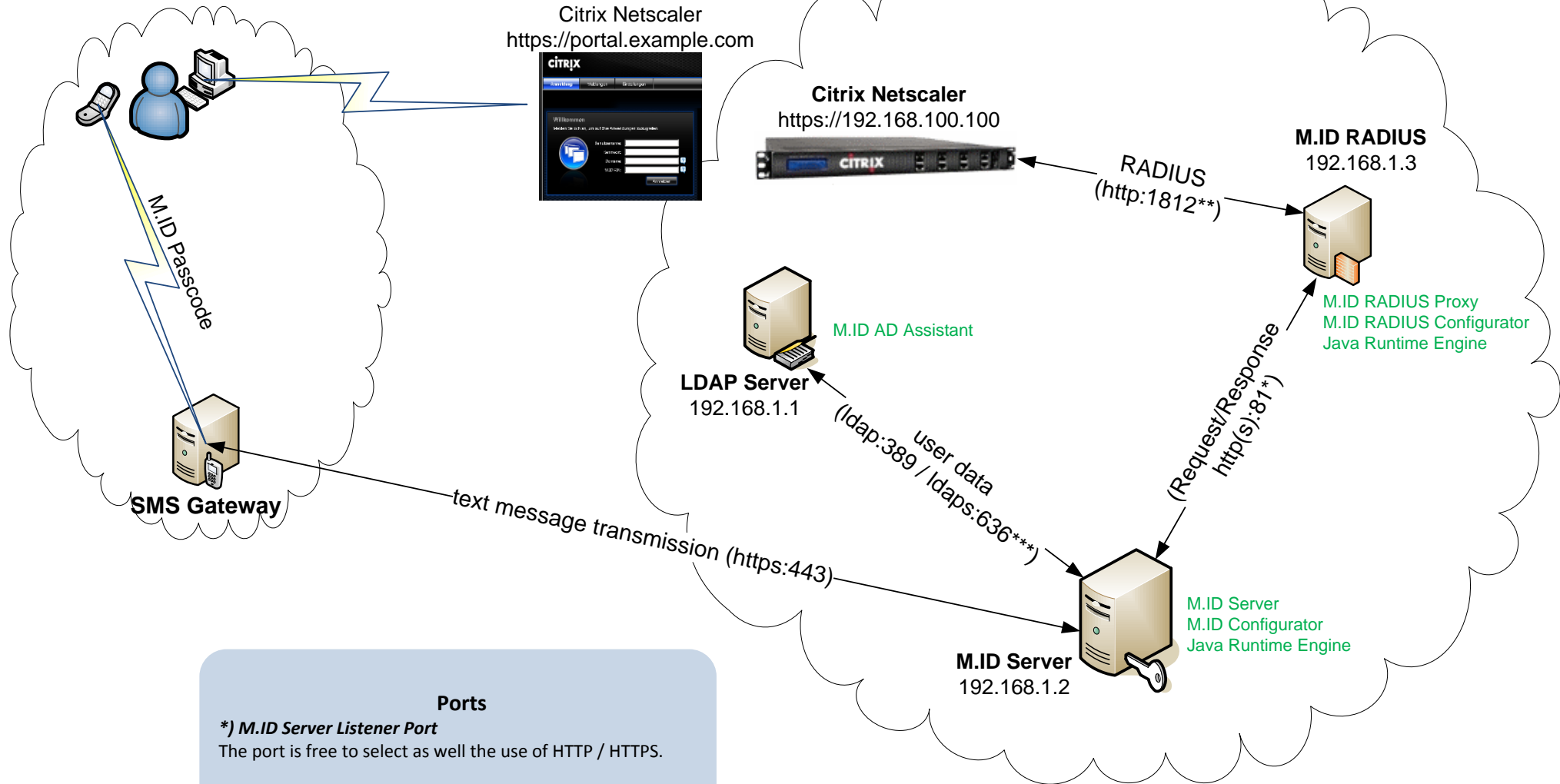
### \*) M.ID Agent

An Agent is a component which communicates with the Swiss SafeLab M.ID Server (eg. M.ID RADIUS, Outlook 2007 addin, M.ID Webintinterface Agent, ISAPI Agent).

### \*\*\*) M.ID SMS Provider Development Kit

The M.ID SMS Provider Development Kit allows the implementation of one's own SMS providers with an open Java API.

# Sample environment for Swiss SafeLab M.ID Server



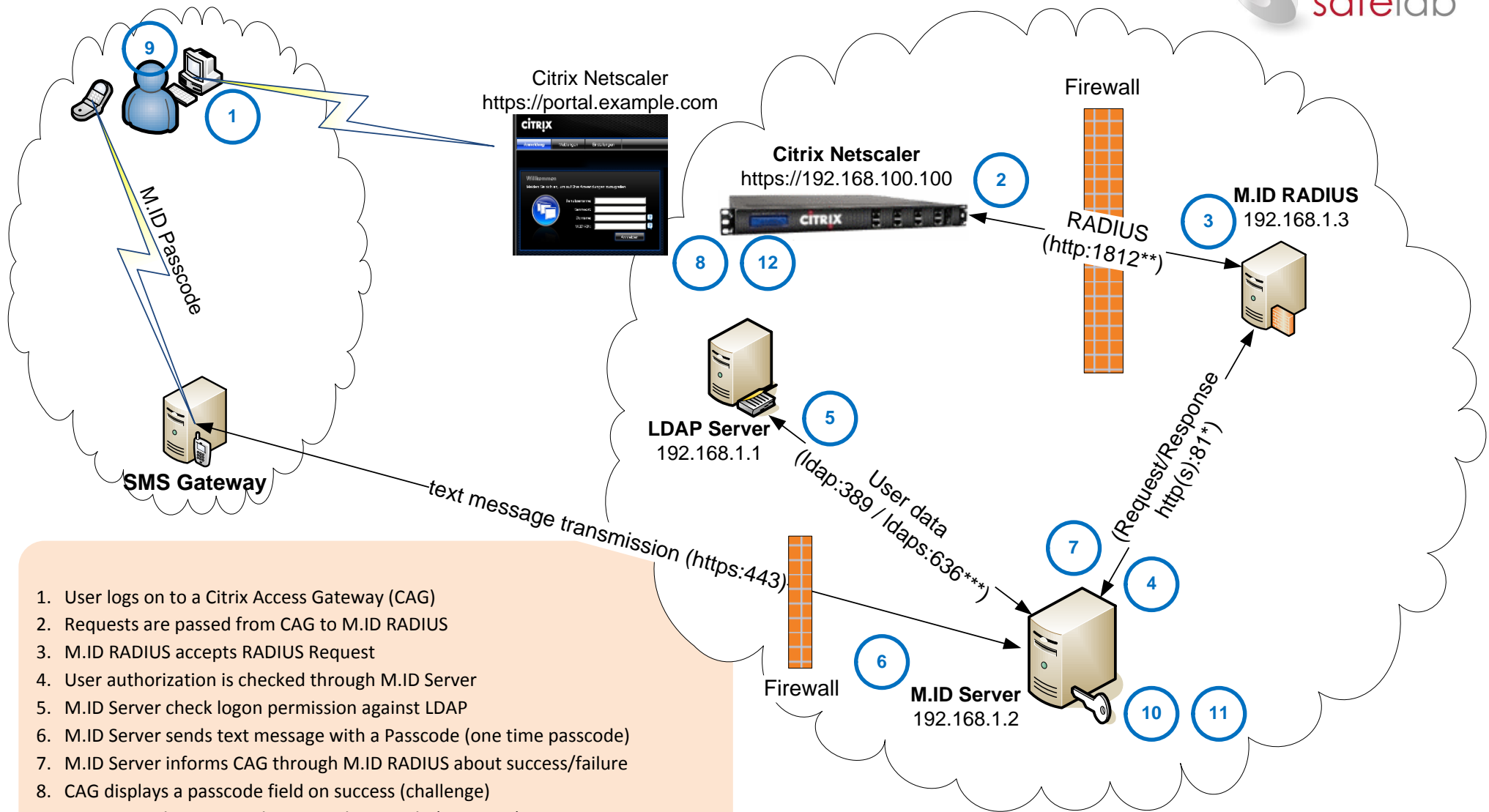
**Ports**

**\*) M.ID Server Listener Port**  
The port is free to select as well the use of HTTP / HTTPS.

**\*\*\*) M.ID RADIUS Proxy Port**  
The port is free to select, in case the appliance supports this.

**\*\*\*) LDAP / LDAPS**  
The port is free to select as well the use of LDAP or LDAPS (requires server certificate in keystore).

# Logon process with Swiss SafeLab M.ID Server and RADIUS



1. User logs on to a Citrix Access Gateway (CAG)
2. Requests are passed from CAG to M.ID RADIUS
3. M.ID RADIUS accepts RADIUS Request
4. User authorization is checked through M.ID Server
5. M.ID Server check logon permission against LDAP
6. M.ID Server sends text message with a Passcode (one time passcode)
7. M.ID Server informs CAG through M.ID RADIUS about success/failure
8. CAG displays a passcode field on success (challenge)
9. User enters his previously received passcode (response)
10. M.ID Server receives passcode through CAG/M.ID RADIUS and checks it
11. M.ID Server informs CAG through M.ID RADIUS about success/failure
12. On success user is forwarded. If need CAG runs additional checks

# Examples for logon portals secured with Swiss SafeLab M.ID



Microsoft  
**Outlook Web App**

Sicherheit ( [Beschreibung einblenden](#) )

Öffentlicher oder gemeinsam genutzter Computer  
 Privater Computer

Outlook Web App Light verwenden

Domäne\Benutzername:

Kennwort:

M.ID PIN / mOTP:

Mit Microsoft Exchange verbunden  
Geschützt durch Microsoft Forefront Threat Management Gateway  
© 2009 Microsoft Corporation. Alle Rechte vorbehalten.

RD Web Access

**Remote Desktop Services Default Connection**  
RemoteApp and Desktop Connection

[Help](#)

Domain\user name:

Password:

M.ID PIN / mOTP:

Security ([how explanation](#))

This is a public or shared computer  
 This is a private computer

To protect against unauthorized access, your RD Web Access session will automatically time out after a period of inactivity. If your session ends, refresh your browser and sign in again.

Windows Server 2008 R2 Microsoft

**Citrix XenApp**

Anmelden

Benutzername:

Kennwort:

Domäne:

M.ID PIN/mOTP:

Ihre Windows-Desktops und -Anwendungen auf Abruf - von PC, Mac, Smartphone oder Tablet.

**CITRIX** Access Gateway™

Willkommen  
Bitte melden Sie sich an.

 Benutzername:

Passwort:

M.ID PIN / mOTP:

CITRIX